

Using **RIDGID** trax with the SR-24

RIDGIDtrax enables basic underground utility mapping in real time. Connect an Android or iOS device wirelessly with Bluetooth to a RIDGID SR-24 Utility Locator and RIDGIDtrax will display GPS position and depth of the target utility. A user can identify the type of utility (water, gas, electric, etc.) and display multiple utilities on the same map. A finished map can be saved and viewed inside the app or exported to a .KMZ file for use with Google Earth®.


Visit www.RIDGID.com/SR-24 to download the app



Connecting Your SR-24

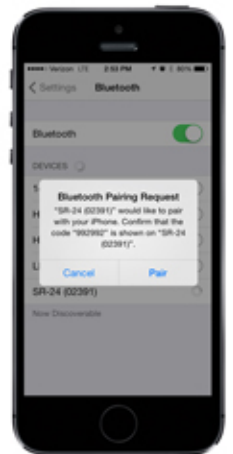
- 1 Turn on the SR-24.

Verify that no other devices are connected to the SR-24 if they were previously connected and still within range.



On your mobile device go to Bluetooth settings, find the device named "SR-24(serial#)". If prompted click the  button on the SR-24.

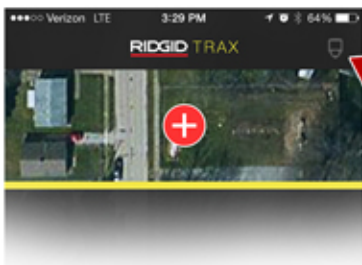
After a successful connection, the bluetooth indicator will appear.

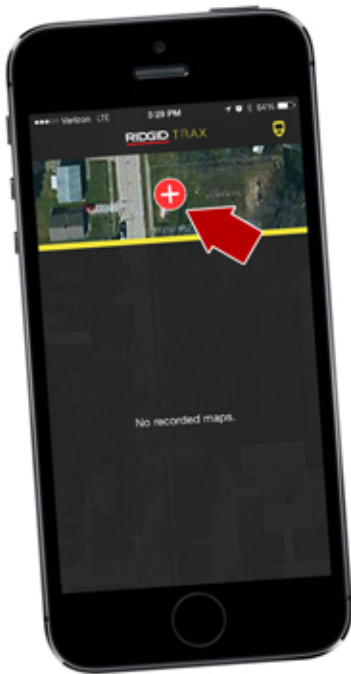
On subsequent uses the SR-24 will automatically connect to your mobile device.



Starting the App

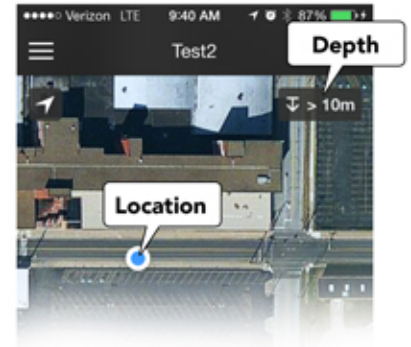
- 2 Launch the RIDGIDtrax application and connect the SR-24 inside the app. Tap on the  at the top right of the app. Select the SR-24 you connected in Step One. On this screen you have the option to select feet or meters for depth. The  will show yellow when an SR-24 is successfully connected.





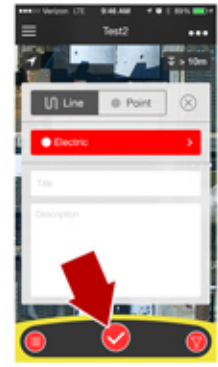
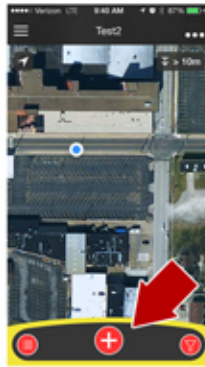
Creating a Map

- 3 Press the red + button to start a new map.



Recording Data

- 4 To start a new line/point within your map, tap on the + button at the bottom. Select "line" or "point" and choose a utility. You can enter a name and description also.



Tap the ✓ button to record a point or start a line.
To end recording of a line, touch the + stop button.

Sharing Maps

- 5 The Map Menu icon on the iPhone ... and on Android ⋮ allows you to save, edit, share or delete your map. Sharing your map will open an email with a .kmz file attached for use within Google Earth®.

Controls at the bottom of the screen give you options to...

- Show, edit and delete data points from your map
- Filter saved points by utility type